



- 11 One stroke fixed volume models
- 13 Two stroke (with overblow) fixed volume models
- Custom fixed volumes available upon request
- Comfortable, ergonomic design

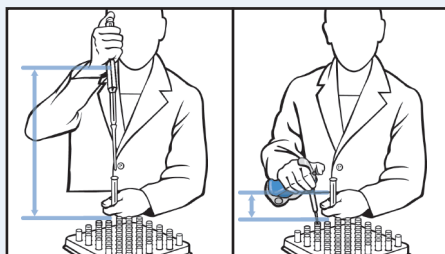
## Ergonomically designed fixed volume pipettes

**Why a new design?** Because traditional pipettes have traditional problems: they're far from comfortable, too long...and so wrong. Using them for more than short periods of time can become a pain in the neck. And back. And shoulder, arm, wrist and hand. They simply were never designed to meet the needs and motions of your body. That's exactly why we developed the Ovation Pipette. It looks different, works better and feels much more comfortable than any pipette you've ever used.

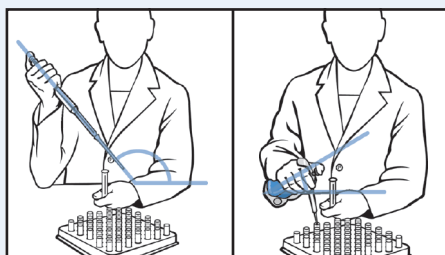
Ovation represents an entirely new approach to pipette design. Its very shape and operating position reinforces ergonomically-correct pipetting by encouraging the users hand, wrist, and arm to assume more natural postures during use. This permits muscles and joints to operate with minimum effort levels, thereby reducing discomfort, fatigue and risk of work-related injuries – while increasing efficiency and accuracy.

Fixed volume Ovation Pipettes are the ideal ergonomic choice where pipetting volumes never deviate from an exact protocol. Both single stroke and two stroke (with overblow) models are available in volume increments from 1 µL to 1000 µL, and additional custom volumes are available upon request. All Ovation pipettes, both fixed volume and adjustable volume models, share an identical structure designed for ergonomically-correct pipetting.

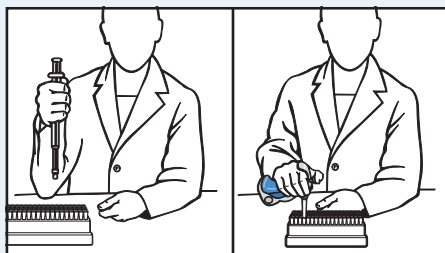
Axial design versus Ovation



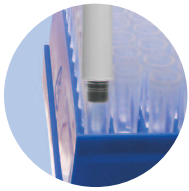
Comparison of arm and elbow elevation during aspirating and dispensing



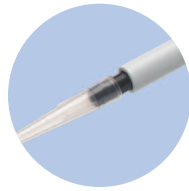
Comparison of forearm and wrist angles during aspirating and dispensing



Comparison of arm and wrist posture when applying tips



**Tip Acquisition** The user inserts the pipette's nozzle into a tip and lightly presses down until an audible "click" is heard. No excessive force or jamming is required to ensure a good seal.



**Liquid Blocking Disposable Nozzle**

Not every pipetting task requires a filtered tip, but every pipette should be protected from contamination no matter what the task. Ovation comes with a filtered nozzle that won't let liquid into the body of the device.



**Aspirating & Dispensing** A very low-force, form-fitting plunger allows the user to manually control the speed of aspirating and dispensing with minimal contact or thumb effort.



**Tip Ejection** A low-force energy release button activates Ovation's tip ejector. A gentle push is all that's needed, ensuring that the forces needed to discard a tip are well below threshold levels recommended by ergonomists.

Fixed Volume Models	VistaLab Catalog #		Color	Volume	Accuracy*	Precision*
	Single Stroke	Two Stroke				
		1257-0001	●	1µL	±2.7%	1.80%
		1257-0002	●	2µL	±1.5%	0.90%
	1157-0005	1257-0005	●	5µL	±1.5%	0.60%
	1157-0010	1257-0010	●	10µL	±1.5%	0.50%
	1157-0020	1257-0020	●	20µL	±1.0%	0.30%
	1157-0025	1257-0025	●	25µL	±1.4%	0.60%
	1157-0050	1257-0050	●	50µL	±0.8%	0.24%
	1157-0100	1257-0100	●	100µL	±0.8%	0.15%
	1157-0200	1257-0200	●	200µL	±0.8%	0.15%
	1157-0250	1257-0250	●	250µL	±1.2%	0.30%
	1157-0300	1257-0300	●	300µL	±1.0%	0.25%
	1157-0500	1257-0500	●	500µL	±0.8%	0.20%
	1157-1000	1257-1000	●	1000µL	±0.8%	0.15%

Inquire about Ovation Fixed Volume multi-pipette sets



Custom volume settings are available upon request

\* Specifications subject to change

**VistaLab Tips – A fitting Solution**

To maximize the exceptional performance and benefits of the Ovation Pipette, we recommend the use of VistaLab tips. Using a substitute or "one-size-fits-all" tip can (and probably will) have a negative effect on ease of use and performance.

Whether you require tips that are sterile, certified RNase/DNase free, non-pyrogenic, trace metal certified or filtered, there's a genuine VistaLab tip to meet your needs. Visit [www.vistalab.com](http://www.vistalab.com) for complete information on all the tip options for Ovation pipettes

